

Bridge strikes...

know your height and plan your route

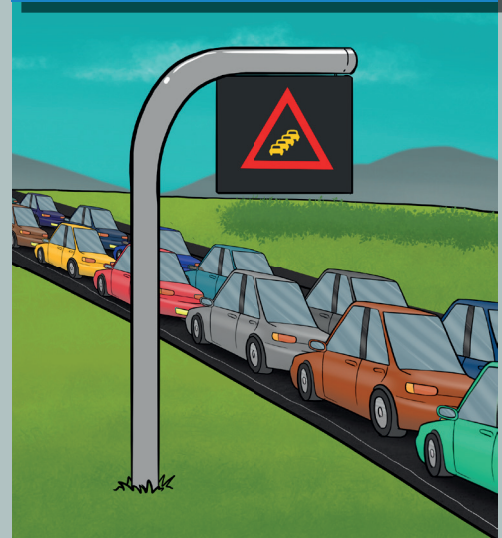
Bridge strikes can cause...



injury...



delays...

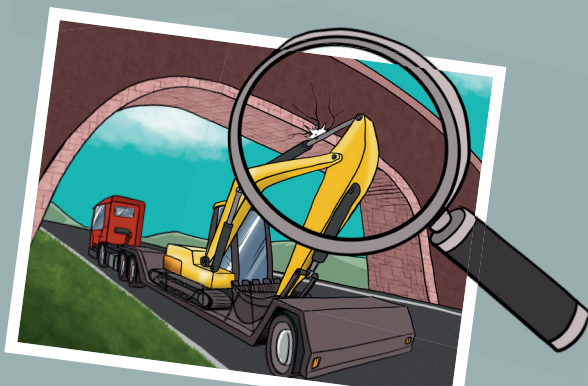


and damage



On average, there are
three bridge strikes a
month on our roads

A single bridge strike
could cost up to £2.6m



In the majority of cases,
the load being transported
hit the bridge



In the last 3 years, two bridges
have been damaged beyond repair

Know your height



Plan your route



Secure your load



Be informed



For more information on route planning and load security please use these search terms or scan the QR codes

'DfT load safety'



'Abnormal load map'



Working on behalf of Highways England