

A417 Missing Link Statement of Community Consultation (SoCC)

Introduction

We operate, maintain and improve England's motorways and major A-roads. The A417 Missing Link scheme is an important part of our ongoing investment. It will improve journeys between Brockworth bypass and Cowley roundabout, bringing benefits to the wider Gloucestershire area.

This Statement of Community Consultation outlines our approach to consulting with the local community for the above scheme. It provides details about how you can take part in the consultation and explains how feedback will influence our proposed design.

To make sure we approach our consultation in the very best way for the local community, we have consulted on this Statement with the local authorities for the area in which the scheme lies. They are Cotswold District Council, Tewkesbury Borough Council and Gloucestershire County Council.

This document also gives you the background to the scheme and how our application to build it will progress.

Our application

The scheme is being developed under the Planning Act 2008 and we are publishing this statement under Section 47 (duty to consult local community) of that Act.

Under the Planning Act 2008, we are required to make an application to the Secretary of State for Transport for a Development Consent Order (DCO) to build this scheme. This application is made through the Planning Inspectorate, who will examine our application and make a recommendation to the Secretary of State. The decision to grant consent to build the scheme will be taken by the Secretary of State and will be based on this recommendation.

A key consideration for the Planning Inspectorate and the Secretary of State for Transport when assessing our DCO application is the National Networks National Policy Statement (NNNPS). The NNNPS sets out the need for development of road projects on the national network, and is the policy against which decisions on major road projects will be made.

We anticipate that our Development Consent Order application for the scheme will be submitted in spring 2020.

When we submit our application, the Planning Inspectorate must consider whether our consultation has been adequate. The best time for you to have your say to inform our final design on this scheme is now by taking part in this consultation.

You can find more information about the Planning Inspectorate and the Planning Act 2008 on the National Infrastructure Planning website: <http://infrastructure.planninginspectorate.gov.uk/> or by calling the Planning Inspectorate on 0303 444 5000.

The scheme

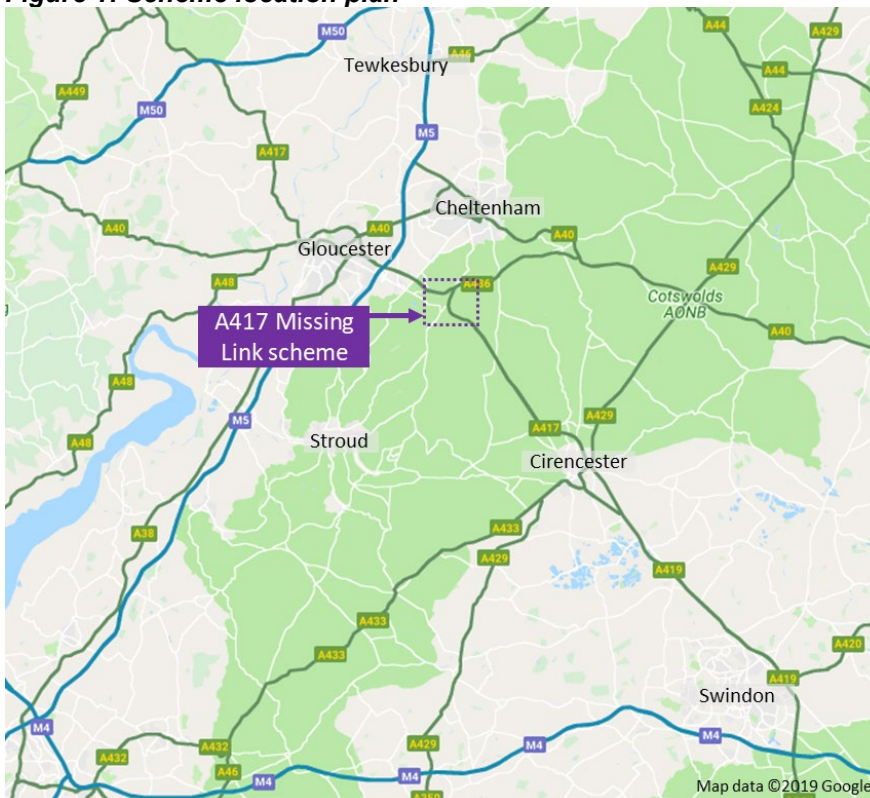
The A417/A419 provides an important route between Gloucester, Cheltenham and Swindon that helps connect the West Midlands and the North to the South of England via the M5 and M4 motorways. While most of the route is dual carriageway, there is one section, which isn't. Known as the 'Missing Link', this three-mile stretch of single carriageway on the A417 between the Brockworth bypass and Cowley roundabout severely restricts the flow of traffic.

In recent years, the case for improvement has become more compelling – to improve safety, support the economy, ease congestion and reduce pollution. In recognition of this, the Government's Road Investment Strategy 2015 set out the intention to improve the A417 Missing Link between the Brockworth bypass and Cowley roundabout. The objectives set for the scheme are:

- **Transport and safety:** to reduce delays, create a free-flowing road network and improve safety along this stretch of the A417
- **Environment and heritage:** to reduce the impact on the landscape, natural and historic environment of the Cotswolds and, where possible, enhance the surrounding environment
- **Community and access:** to reduce queuing traffic and pollution, improve access for local people to the strategic road network, and support residents' and visitors' enjoyment of the countryside
- **Economic growth:** to help boost growth and prosperity by making journeys more reliable and improving connectivity.

Below is a plan showing the location of the scheme:

Figure 1: Scheme location plan



In summary, the scheme consists of:

- 3.6 miles (5.8 km) of new dual carriageway connecting the existing A417 Brockworth bypass with the existing A417 dual carriageway south of Cowley
- the section to the west of the existing Air Balloon roundabout would follow the existing A417 corridor. However, the section to the south and east of the Air Balloon roundabout would be offline, away from the existing road corridor
- a new junction at Shab Hill, providing a link from the A417 to the A436 towards Oxford and into Birdlip
- a green bridge near Crickley Hill
- a new junction would be included near Cowley, replacing the existing Cowley roundabout
- the existing A417 between the Air Balloon roundabout and the Cowley roundabout would be repurposed. Some lengths of this existing road would be converted into a route for walkers, cyclists and horse-riders. Other sections would be retained to maintain local access for residents.

Consulting the community and previous consultations

Between 15 February and 29 March 2018 we held a consultation on options for improvements for the A417 Missing Link.

We asked consultees for their views on the proposed route options for the Missing Link, in addition to any further important information that we should take into account as part of the development.

More details of the consultation, including how we decided to progress Option 30, are included in the [A417 Missing Link Report on Public Consultation](#) and [Preferred Route Announcement leaflet](#) which are available to view and download at <https://highwaysengland.co.uk/projects/a417-missing-link/>

Next consultation – why and when

It is important to us that the consultation enables members of the public to have their say by:

- providing the opportunity to give feedback on potential mitigation options
- encouraging the community to help shape our proposals to maximise local benefits
- helping people understand the benefits and local impact of our proposals
- enabling potential mitigation measures to be considered and, if appropriate, built into the project before an application is submitted
- identifying ways in which our proposals, without significant costs, support wider strategic or local objectives.

Your comments will help us achieve these objectives. We will listen to everyone's views and consider your opinions before we submit our DCO application.

The consultation will run from Friday 27 September to Friday 8 November 2019. During the consultation period, we will provide information on various topics, including:

- the alignment of the main dual carriageway
- junction layouts
- environmental assessments and potential environmental impacts
- environmental mitigation measures
- arrangements for the construction stage of the scheme
- arrangements to mitigate the severance of any communities, farms, or businesses.

The scheme is Environmental Impact Assessment (EIA) development, and therefore we are publishing a Preliminary Environmental Information (PEI) Report as part of the consultation material. This gives information about the potential environmental effects of the scheme and the measures proposed to reduce those effects, to assist well-informed responses to the consultation. More details of where the PEI Report will be available to view as part of the consultation can be found in section nine of this document.

Who can take part?

Everybody is welcome to take part in our consultation and we welcome all views. We will take them into account before we submit our final design as part of the DCO application.

How will we consult?

We will use the following methods to raise awareness of the consultation and availability of the consultation documents:

Table 1: Consultation activities

Method	Detail
<p>Public consultation events</p>	<p>We will hold a series of public consultation events to allow the local community to view the proposals, talk with representatives from the project team and provide written feedback via paper copies of our feedback questionnaire, completing the questionnaire online or emailing a417missinglink@highwaysengland.co.uk. The events will take place at the following locations and times:</p> <ul style="list-style-type: none"> • Gloucester Rugby Club, Kingsholm Rd, Gloucester, GL1 3AX, Monday 30 September, 2pm – 8pm • National Star College, Ullenwood, GL53 9QU, Thursday 3 October, 1pm - 8pm • Witcombe and Bentham Village Hall, Pillcroft Road, GL3 4TB, Saturday 5 October, 11am – 6pm • St Andrews Church Hall, Montpellier Street, Cheltenham, GL50 1SP, Monday 7 October, 11am – 6pm • Birdlip Church, Birdlip, GL4 8JH, Wednesday 9 October, 2pm – 7pm • Cirencester Town Council, Bingham House, 1 Dyer St, Cirencester, GL7 2PP, Friday 11 October, 11am – 6pm • Churchdown Community Association, Parton Road, Churchdown, Gloucester, GL3 2JH, Tuesday 15 October, 2pm – 8pm <p>Printed copies of the consultation materials will be available at consultation events to review. Copies of the consultation brochure and feedback questionnaire will be available to take away at the consultation events.</p>
<p>Stakeholder briefing</p>	<p>We will host a briefing event at the start of the consultation to raise awareness of the consultation amongst local stakeholders and organisations.</p>
<p>Postcard mail out</p>	<p>Working with Cotswold District Council, Tewkesbury Borough Council and Gloucestershire County Council,</p>

Method	Detail
	<p>we have developed a consultation target area for the distribution of our consultation information. This is based on who we think will be most affected by our proposals. This area is shown on the plan at Appendix A.</p> <p>We will let people within the local area know about our consultation by sending them a postcard. The postcard will provide details of the public consultation events, how to find out more information and provide feedback. Addresses will be taken from the latest version of the Royal Mail database.</p>
Media releases	<p>We will issue a media release to the following local press publications and media outlets at the start of the consultation period:</p> <ul style="list-style-type: none"> • Gloucestershire Echo • Gloucestershire Citizen • Gloucestershire Live • Western Daily Press • BBC Points West/South West • ITV South West • Breeze FM • Heart FM <p>A second media release will be issued to these publications and outlets before the end of the consultation period to encourage people to provide their feedback before the consultation period closes.</p>
Emails and letters	<p>We will send either emails or letters advising of the consultation and how to get involved to:</p> <ul style="list-style-type: none"> • MPs in the Gloucestershire area • MEPs representing the South West region • Elected representatives at Cotswold District Council, Tewkesbury Borough Council and Gloucestershire County Council • Directly affected parish councils • Parish councils/meetings adjacent to directly affected parish councils.
Statutory notices	<p>Statutory notices to publicise the proposed DCO application and the SoCC will be published as follows:</p> <ul style="list-style-type: none"> • proposed DCO application - once in a national newspaper and the London Gazette and twice in local circulating newspapers • publicising the SoCC - in two local circulating newspapers.
Media advert	<p>We will place an advert advising of the consultation and promoting the public consultation events in the online edition of Gloucestershire Live.</p>
Social media	<p>We will promote the consultation on Highways England's South West Twitter account, @HighwaysSWEST and will also be running a Facebook advertising campaign.</p>

Method	Detail
	Consultation feedback will not be accepted through social media channels.
Partner communications	We will provide information regarding the consultation, including posters, to directly affected local authorities, parish councils and other organisations such as GFirst LEP and Cotswold Way Association so that they can raise awareness of the consultation through their own communications channels.
Scheme website	Information on the proposed scheme, public consultation events, what we are consulting on and how to respond will be available on the scheme website. This will become publicly available on Friday 27 September 2019, the start date of consultation.

Any activity(s) that cannot be undertaken due to circumstances beyond our control (such as severe weather conditions) where possible, will be substituted with similar activity(s) and advertised in local newspapers (via press release) circulating in the vicinity of the scheme. Any activity changes will also be published on Highways England's South West twitter account @HighwaysSWEST.

How to respond to the consultation

A consultation response form will be produced to help you provide comments on the scheme. All consultation responses must be made in writing by:

- Completing the online feedback questionnaire via <https://highwaysengland.co.uk/projects/a417-missing-link/>
- Attend a consultation event where you can meet the project team and complete a paper copy
- Pick up a hardcopy at one of our display/deposit locations which can be posted via freepost to the FREEPOST A417 MISSING LINK, or
- Alternatively, you can:
 - Email a417missinglink@highwaysengland.co.uk;
 - Write to us FREEPOST A417 MISSING LINK

All responses must be received by Friday 8 November at 11.59pm. Responses received after that date may not be considered.

We are aware that other organisations are likely to be carrying out public consultation activities on their projects and make demands on the time of the public and their representatives. We will try to ensure that our consultation has due regard to other consultations taking place in the locally.

Information available at and details of local display/deposit locations

We will make the following documents available as part of the consultation:

Table 2: Consultation documents

Document	Detail
Consultation brochure	<p>Written in plain English, this document will provide a summary of the proposals including:</p> <ul style="list-style-type: none"> • the background to the scheme • a summary of the proposed scheme • the vision for the scheme • information about potential benefits, effects and impacts of the proposed scheme • how we propose to mitigate against any potential impacts • signposts for readers to more detailed information reports and how to provide feedback on the proposed scheme.
Feedback questionnaire	<p>Available in hard copy and online, this questionnaire will be available for people to provide their feedback on the specific aspects of the scheme, and provide overall feedback on our proposals.</p>
Preliminary Environmental Information (PEI) Report	<p>This will contain preliminary information on the likely environmental effects of our proposals as we have ascertained them so far, for example noise and air quality, and how we propose to reduce these effects, as well as how we propose to maximise the benefits of the scheme. A non-technical summary of the PEI Report will also be made available.</p>
Map of the route	<p>This will highlight where the proposed route is located.</p>
A set of plans of the scheme	<p>These will provide details of the designs for the proposed scheme, including a plan showing the red line boundary of the application proposed.</p>
A notice of application	<p>We will publish a notice of the consultation and provide it to statutory consultees as required.</p>
Statement of Community Consultation (SoCC)	<p>This SoCC document will be made available as part of the consultation.</p>

We will make these consultation documents available to view in the following ways:

Table 3: Methods to make consultation documents available

Method	Detail
Scheme website	All consultation documents will be published on the scheme's website which can be accessed via https://highwaysengland.co.uk/projects/a417-missing-link/
Deposit locations	<p>Copies of all consultation documents will also be placed in the following locations for the duration of the consultation period:</p> <ul style="list-style-type: none"> • Cotswold District Council main offices, Trinity Road, Cirencester, Gloucestershire, GL7 1PX • Gloucestershire County Council, Shire Hall, Westgate St, Gloucester GL1 2TG • Tewkesbury Town Hall, High Street, Tewkesbury, GL20 5AL <p>See Appendix B for full opening times.</p>
Public information points	<p>Consultation brochures and feedback questionnaires will also be available to pick up at public information points as follows:</p> <ul style="list-style-type: none"> • Brockworth Community Library, Moorfield Road, Brockworth, GL3 4ET • Cheltenham Library, Clarence Street, Cheltenham, GL50 3JT • Churchdown Library, Parton Road, Gloucester, GL3 2AF • Cirencester Library, The Waterloo, Cirencester, GL7 2PZ • Coleford Library, The Main Place, Old Station Way, Coleford, GL16 8RH • Crickley Hill Visitor Centre, Crickley Hill, Birdlip, Gloucester GL4 8JY • Gloucester Library, Brunswick Road, Gloucester, GL1 1HT • Hucclecote Library, Hucclecote Road, Gloucester, GL3 3RT • Moreton Area Centre, High Street, Moreton-in-Marsh, Gloucestershire, GL56 9QU • National Star College, Ullenwood, GL53 9QU • Stroud Library, Landsdown, Stroud, GL5 1BB • Tewkesbury Library, Sun Street, Tewkesbury, GL20 5NX

Method	Detail
	<p>See Appendix C for full opening times.</p> <p>We will check stock levels of the consultation brochure and feedback questionnaire with venues and supply additional copies as required.</p>
Requests for documents	<p>Paper copies of the consultation brochure, feedback questionnaire and Statement of Community Consultation (SoCC) will be supplied free of charge, however, there may be a charge for paper copies of other consultation materials of up to £200. Please contact Highways England for further details.</p>

Next steps

We will record and carefully consider all responses received during the consultation, and consider these in finalising our application before we submit it to the Planning Inspectorate.

We will summarise our findings in a Consultation Report, which will include a description of how our application was informed by the responses received, and outline any changes made as a result of consultation. It forms part of our submission to the Planning Inspectorate that is planned for spring 2020.

The Planning Inspectorate will decide whether the application meets the required standards to proceed to examination, and will determine whether our consultation has been adequate.

If, as a result of feedback from the design consultation, the proposals change to the extent that it is necessary to undertake further geographically targeted consultation, this would be undertaken in accordance with the principles and methods set out in this SoCC.

For more information, visit our scheme webpage, here:

<https://highwaysengland.co.uk/projects/a417-missing-link/> where you can also sign up for email alerts whenever the webpage is updated. If you have any queries about this scheme, please contact the project team directly by calling 0300 123 5000 or emailing a417missinglink@highwaysengland.co.uk.

Your data, your rights

Your data, your rights

On 25 May 2018, the General Data Protection Regulations (GDPR) became law. The law requires Highways England to explain to you – consultees, stakeholders and customers – how your personal data will be used and stored.

Highways England adheres to the government's consultation principles, the Planning Act 2008 and the Highways Act 1980 as required, and may collect personal data to help shape development of highways schemes.

Personal data collected by the project team will be processed and retained by

Highways England and its appointed contractors until the scheme is complete. In some instances consultation responses may also be sent to the Planning Inspectorate.

Under the GDPR regulations you have the following rights:

- Right of access to the data (Subject Access Request)
- Right for the rectification of errors
- Right to erasure of personal data – this is not an absolute right under the legislation
- Right to restrict processing or to object to processing

■ Right to data portability

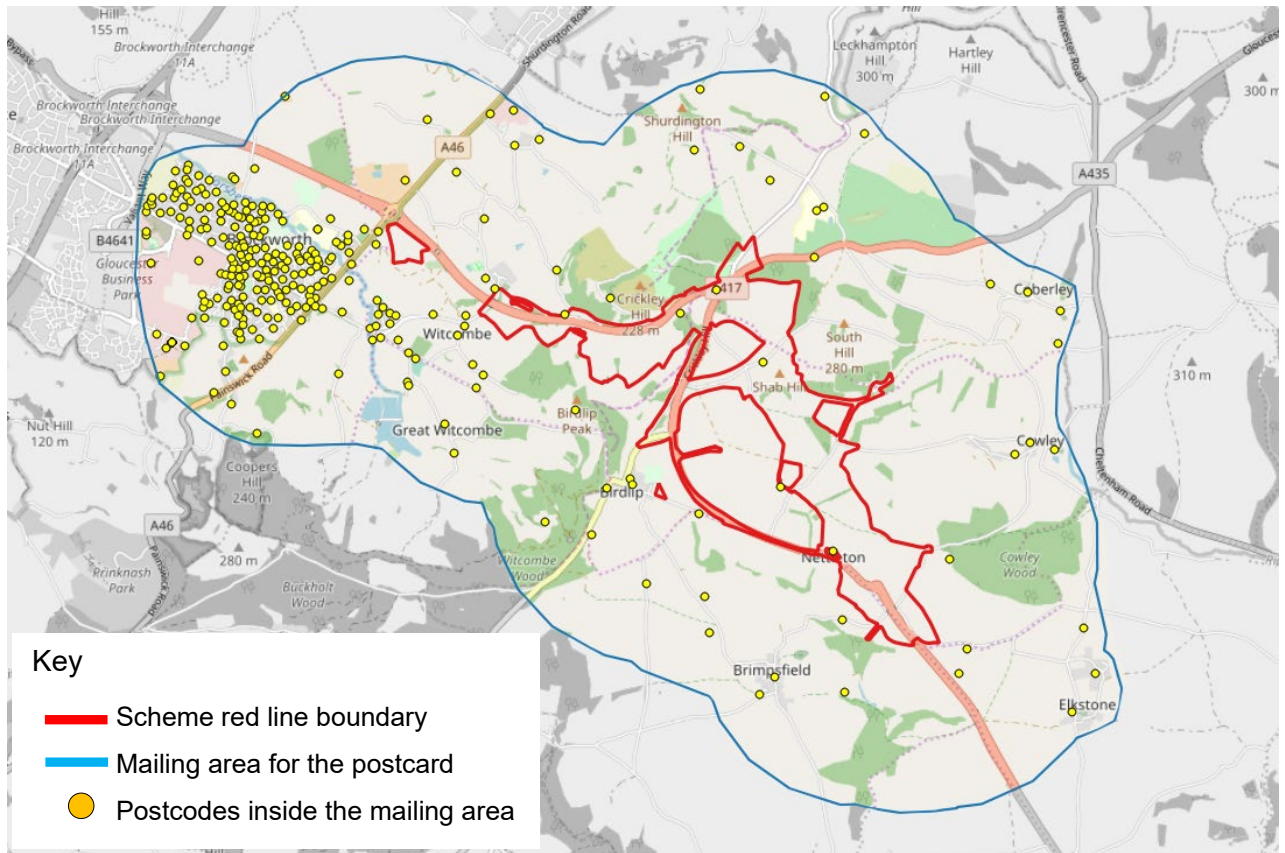
If, at any point, Highways England plans to process the personal data we hold for a purpose other than that for which it was originally collected, we will tell you what that other purpose is. We will do this prior to any further processing taking place and we will include any relevant additional information, including your right to object to that further processing.

You have the right to lodge a complaint with the supervisory authority, the Information Commissioners Office.



If you'd like more information about how we manage data, or a copy of our privacy notice, please contact: DataProtectionAdvice@highwaysengland.co.uk

Appendix A: Mailing area for postcard



Appendix B: *Opening times for deposit locations

Deposit location	Opening times
Cotswold District Council, Main Offices, Trinity Road, Cirencester, GL7 1PX	9am – 5pm Monday to Friday
Gloucestershire County Council, Shire Hall, Westgate St, Gloucester, GL1 2TG	8.30am – 5pm Monday to Friday
Tewkesbury Town Hall, High Street, Tewkesbury, GL20 5AL	10am – 3pm Monday to Thursday
*Highways England are not liable for any change in the opening times listed above	

Appendix C: *Opening times for information points

Information point	Opening times
Brockworth Community Library, Moorfield Rd, Brockworth, Gloucester, GL3 4EX	10am - 1pm, 2pm - 5pm Monday 10am - 1pm, 2pm - 5pm Tuesday 10am - 1pm, 2pm - 5pm Wednesday 2pm - 5pm Thursday 10am - 12.30pm Saturday
Cheltenham Library, Clarence St, Cheltenham, GL50 3JT	9am - 7pm Monday 9am - 5.30pm Tuesday 9am - 7pm Wednesday 9am - 5.30pm Thursday 9am - 7pm Friday 9am - 4pm Saturday
Churchdown Library, Parton Road, Gloucester, GL3 2AF	10am - 1pm, 2pm - 6pm Tuesday 10am - 1pm, 2pm - 5pm Wednesday - Friday 10am - 1pm Saturday
Cirencester Library, The Waterloo, Cirencester, GL7 2PZ	9.30am - 5pm Monday 9.30am - 7pm Tuesday 9.30am - 1pm Wednesday 9.30am - 5pm Thursday 9.30am - 7pm Friday 9.30am - 4pm Saturday
Coleford Library, The Main Place, Railway Dr, Coleford, GL16 8RH	10am - 2pm Monday 10am - 7pm Tuesday 10am - 5pm Wednesday 10am - 5pm Thursday 10am - 5pm Friday 10am - 2pm Saturday
Crickley Hill Visitor Centre	8am - 5pm Monday to Friday
Gloucester Library, Brunswick Rd, Gloucester, GL1 1HT	9am - 7pm Monday 9am - 7pm Tuesday 9am - 5.30pm Wednesday 9am - 7pm Thursday 9am - 5.30pm Friday 9am - 4pm Saturday
Hucclecote Library, Hucclecote Rd, Gloucester, GL3 3RT	9.30am - 12pm, 1pm - 4pm Monday 9.30am - 12pm, 1pm - 4pm Tuesday 9.30am - 12pm, 1pm - 5pm Wednesday 2pm - 5pm Thursday 9.30am - 12pm, 1pm - 7pm Friday 10am - 4pm Saturday
Moreton Area Centre, High Street, Moreton-in-Marsh, Gloucestershire, GL56 9QU	8.45am - 5.15pm Monday - Friday 10am - 1pm Saturday

National Star College, Ullenwood, GL53 9QU	8am – 6pm Monday - Friday
Stroud Library, Landsdown, Stroud, GL5 1BB	9.30am – 6.30pm Monday 9.30am – 5pm Tuesday 9.30am – 5pm Wednesday 9.30am – 2pm Thursday 9.30am – 6.30pm Friday 9.30am – 4pm Saturday
Tewkesbury Library, Sun Street, Tewkesbury, GL20 5NX	9.30am – 5pm Monday 9.30am – 7pm Tuesday 9.30am – 1pm Wednesday 9.30am – 7pm Thursday 9.30am – 5pm Friday 9.30am – 4pm Saturday
*Highways England are not liable for any change in the opening times listed above	