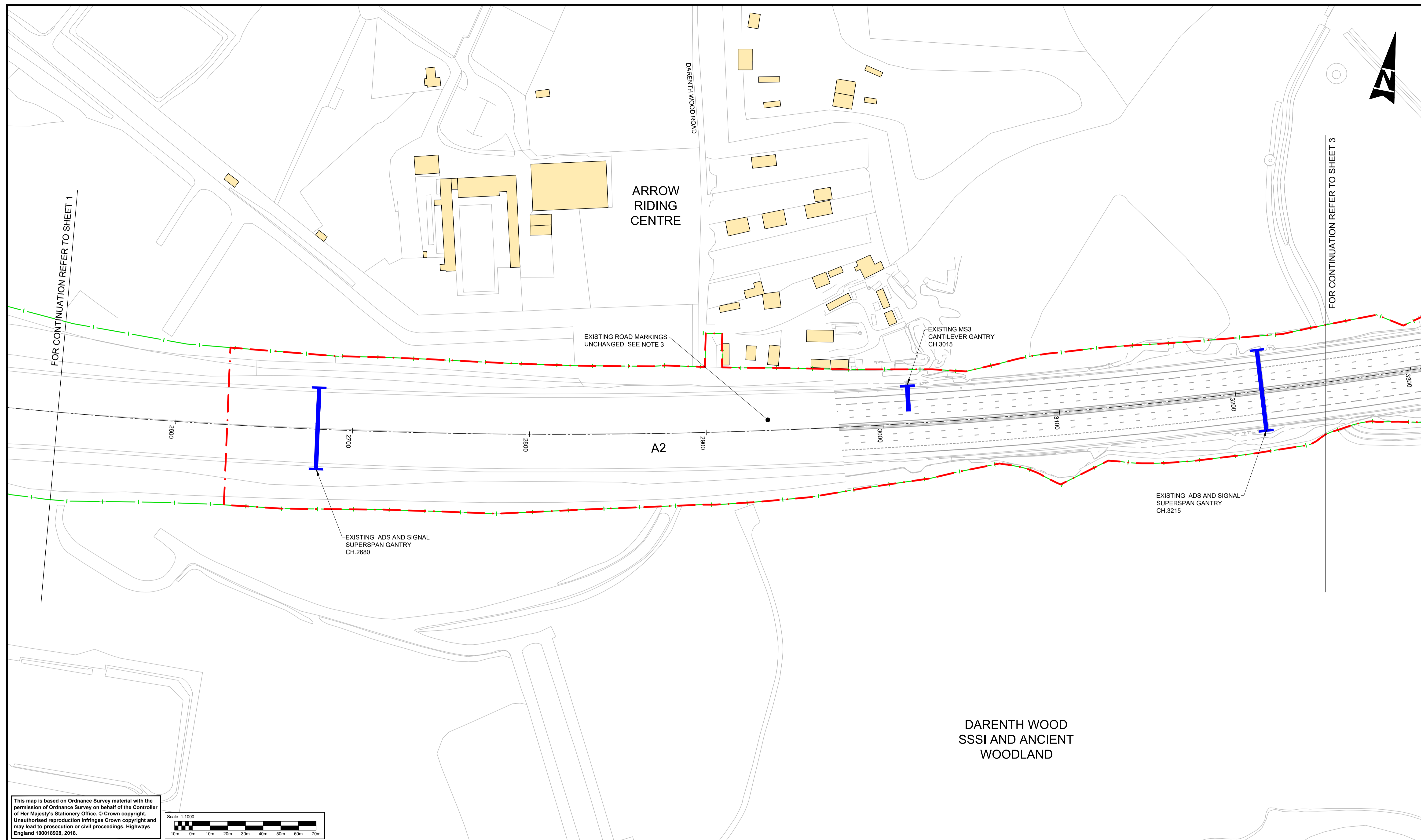


DO NOT SCALE

100  
0 10  
Millimetres

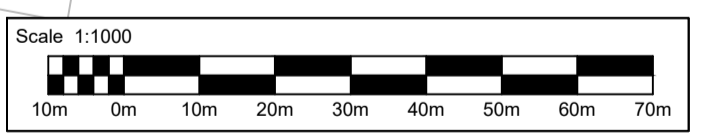


FOR CONTINUATION REFER TO SHEET 1

FOR CONTINUATION REFER TO SHEET 3



This map is based on Ordnance Survey material with the permission of Ordnance Survey on behalf of the Controller of Her Majesty's Stationery Office. © Crown copyright. Unauthorised reproduction infringes Crown copyright and may lead to prosecution or civil proceedings. Highways England 100018928, 2018.



**NOTES**

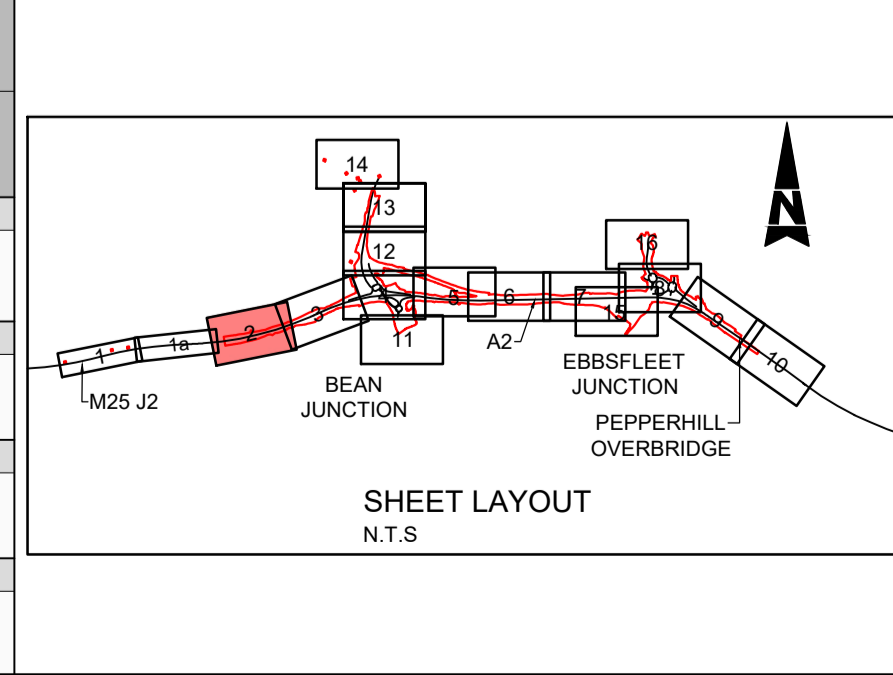
- ALL DIMENSIONS ARE IN METRES UNLESS OTHERWISE STATED.
- FOR GENERAL NOTES AND KEY REFER TO DRG. No. HE543917-ATK-HGN-XX-DR-CH-000200.
- EXISTING ROAD MARKINGS NOT SHOWN WEST OF CIRCA CHAINAGE 2970 BECAUSE THIS AREA IS BEYOND THE EXTENT OF THE TOPOGRAPHICAL SURVEY.

**"THESE DRAWINGS ARE A PRELIMINARY DESIGN FOR USE DURING PCF STAGE 3. THEY SHOW AN INDICATION OF THE PROPOSED LAYOUT BUT DO NOT SHOW FULL CONSTRUCTIONAL DETAILS OR WIDTHS. FURTHER REFINED DETAILED DESIGN WILL BE UNDERTAKEN DURING LATER STAGES OF DEVELOPMENT OF THE SCHEME PRIOR TO CONSTRUCTION. FOR INFORMATION ONLY."**

**SAFETY, HEALTH AND ENVIRONMENTAL INFORMATION**

In addition to the hazards/risks normally associated with the types of work detailed on this drawing, note the following significant residual risks (Reference shall also be made to the design hazard log).

<b>Construction</b>	REFER TO HEALTH AND SAFETY RISK REGISTER DOCUMENT No. HE543917-ATK-GHS-XX-HS-ZS-000004.
<b>Maintenance / Cleaning</b>	REFER TO HEALTH AND SAFETY RISK REGISTER DOCUMENT No. HE543917-ATK-GHS-XX-HS-ZS-000004.
<b>Use</b>	REFER TO HEALTH AND SAFETY RISK REGISTER DOCUMENT No. HE543917-ATK-GHS-XX-HS-ZS-000004.
<b>Decommissioning / Demolition</b>	REFER TO HEALTH AND SAFETY RISK REGISTER DOCUMENT No. HE543917-ATK-GHS-XX-HS-ZS-000004.



Description FOR HE REVIEW						
Status	Revision	Drawn	Checked	Reviewed	Authorised	Issue Date
B1	C01	RKK	OP	CT	CH	05/07/18
Description STAGE 3 DESIGN FIX 3						
Status	Revision	Drawn	Checked	Reviewed	Authorised	Issue Date
A1	C02	RKK	JA	CT	CH	22/08/18
Description FOR STAGE 3 SIGN-OFF						
Status	Revision	Drawn	Checked	Reviewed	Authorised	Issue Date
A1	C03	RKK	JA	AEM	CH	21/11/18
Description FOR INFORMATION: EBBSFLEET PYLON ACCESS REVISED ON SHEETS 8 AND 16						
Status	Revision	Drawn	Checked	Reviewed	Authorised	Issue Date
A1	C04	RKK	AEM	CH	CH	18/01/19
Description FOR INFORMATION						
Status	Revision	Drawn	Checked	Reviewed	Authorised	Issue Date
A2	C05	RKK	EBB	AEM	RJM	22/02/19

Drawing Suitability: APPROVED - ORDERS / LICENSES

Status: A2

Project Title: A2 Bean and Ebbsfleet Junctions Improvement

**SNC-LAVALIN** | **ATKINS** | Epsom Gateway, Ashley Avenue, Epsom, Surrey, KT18 5AL. Tel: +44 (0)1372 726140, Fax: +44 (0)1372 740055, www.atkinsglobal.com

Copyright © Atkins Limited (2018)

Client: Working on behalf of **highways england**

Drawing Number	Project	Originator	Volume
HE543917	XX	ATK	HGN
Location	Type	Role	Number
	XX	- DR - CH -	000202
Original Size	Scale	Project Ref. No.	Sheet
A1	1:1000	5158159	2 of 16
			Rev: C05