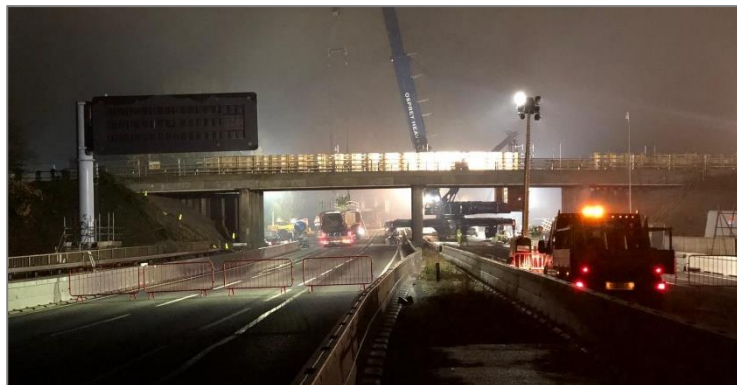


December 2019 news bulletin

We are closing the motorway between junctions 6 and 8/9 over the weekend of 17-20 January 2020. The diversion route shown overleaf will be in place for the weekend while we demolish the old Huntercombe Spur bridge at junction 7.

We are also planning to close the westbound slip roads at Junction 7 over the weekend of 10-13 January, but the signed diversion route will use the motorway itself. Finally, the motorway will be closed between Junctions 4b and 5 over the weekend of 21-24 February: more details on the next page.

The project continues over the next week, but we will shut down from Friday 20 December 2019, then restart on Monday 6 January 2020. Thank you for your patience during 2019 and we wish you a very Merry Christmas and a Happy New Year.



What are the key milestones for the M4 project in 2020?

More weekend closures between junctions 4b and 8/9



During 2019 we have demolished Recreation Ground, Marsh Lane and Oldway Lane bridges, lifted in the bridge deck for the new Monkey Island Lane bridge, and installed a temporary bridge at Huntercombe Spur Junction 7. This temporary bridge needs some more work before we can demolish the old bridge in the new year.

In 2020, there will be several more weekend closures of the motorway to progress work on the 11 bridges that need replacing as part of the project.

Completion of most work between junctions 8/9 and 12



We expect to finish most of the work between junctions 8/9 and 12 by the middle of 2020.

This won't result in a return to the national speed limit straight away as the new systems will require testing and commissioning, but it will help us prepare the western section of the route for opening as a smart motorway during 2021.

The completion date for the whole project, including the bridge work on the eastern section of the route, remains Spring 2022.

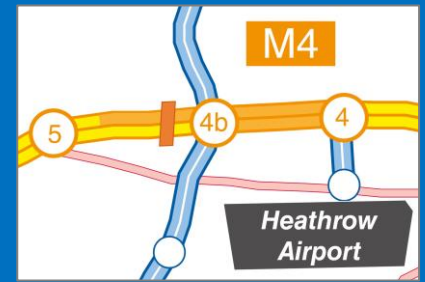
Progress during 2019 and challenges ahead in 2020



Above: diversion route when the motorway is closed between junction 6 and 8/9

2019 has been a big year for the M4 smart motorway team. We have proceeded at pace with our work and carried out the first three weekend closures of the M4 needed to demolish existing and install new and temporary bridges. Work is now underway along all 32 miles of the smart motorway route and 2020 is set to be an even bigger and more challenging year.

Old Slade Lane bridge near J4b



This pedestrian and cycle bridge close to the M25 junction and Heathrow Airport is scheduled to be demolished over the weekend of **21-24 February 2020** and will be replaced later in the year. The M4 will be **closed for the weekend between junctions 4b and 5**. The diversion route is currently being agreed with the local authorities and Highways England colleagues.



We recently found archive photos of the M4 under construction in 1959-60. These show work underway on the old Monkey Island Lane bridge in mid-1960. If you have old pictures that you'd like to share, please send them to us using the details below.

Find out more

You can find out more by visiting our websites at: <https://m4j3to12smartmotorway.commonplace.is/> or www.highwaysengland.co.uk/m4j3to12. You can keep up to date with live traffic information by following the regional twitter feeds [@highwaysEAST](https://twitter.com/highwaysEAST) and [@highwaysSEAST](https://twitter.com/highwaysSEAST) or by visiting [Traffic England](https://www.trafficengland.co.uk/).

If you have a question that you would like a response to please continue to email us at: M4J3to12smartmotorways@highwaysengland.co.uk, call 0300 123 5000 or write to: M4 J3-12 Smart Motorway, Highways England, 2 Colmore Square, Birmingham B4 6BN.