

January 2020 news bulletin

We are closing the motorway between Junctions 4b and 5 over the weekend of 21-23 February 2020. A diversion route will be in place for the weekend while we demolish Old Slade Lane Bridge near Junction 4b (see next page). The work will be complete early Sunday morning 23 February to help clear the way for drivers heading to and from the Six Nations match at Twickenham that afternoon.

The recent weekend closure over 17-20 January was for the demolition of the old Huntercombe Spur bridge at Junction 7. A temporary bridge is in place while the new permanent replacement is built. All work was successfully completed on time and we'd like to thank residents and road users for their patience over the weekend. These images from the weekend (right) show the scale and complexity of the work we are engaged in for this project.

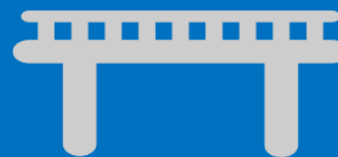


Extension of traffic management and bridge progress so far



The traffic management for the project will soon be extended between Junctions 6 and 4b of the M4 to join up the two sections already in place. This will mean the **50mph** speed limit and narrow lanes will be in place along the whole route until the summer period when we start to complete the construction works between Junctions 8/9 and 10 before continuing work to the west. Free breakdown recovery will remain in place, and if you get into difficulty our team will move your vehicle to a place of safety so you can call for assistance.

So far in the project we have made good progress on the bridges that need replacing to accommodate the smart motorway:



We have
demolished
4 bridges

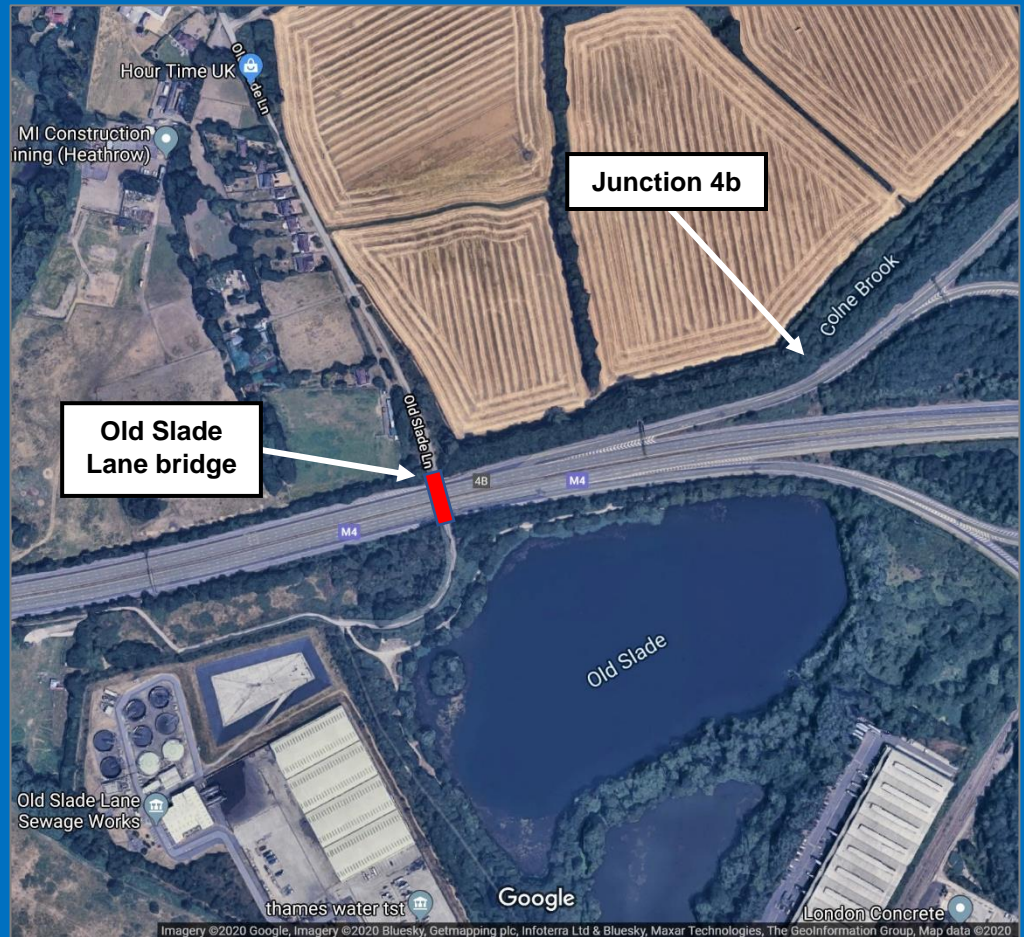
We installed a
temporary bridge
at Junction 7



We have built the
new deck at
Monkey Island
Lane bridge

Old Slade Lane bridge near J4b next up for demolition

This pedestrian and cycle bridge close to the M25 junction and Heathrow Airport will be demolished over the weekend of **21-23 February 2020** and will be replaced later in the year. The M4 will be **closed for most of the weekend between junctions 4b and 5**. The diversion route will use the M25, A3113, A3044 and the A4. We are however reopening the M4 on Sunday morning 23 February so that the closure does not affect traffic going to and from the Six Nations England vs Ireland rugby match at Twickenham taking place that afternoon. We will be keeping a close eye on major events throughout the year to avoid disruption.



More weekend closures of the M4 planned in 2020

We have so far completed 4 weekend closures of the M4 since September 2019, but we have approximately 22 more before the end of 2020.

The exact dates are currently being scheduled and these will be published in the February 2020 bulletin. Given that most of the bridges we need to work on are between Junctions 6 and 8/9, that stretch of the M4 will see the most weekend closures (about half of the total), followed by Junctions 5 to 6.

We understand the inconvenience these can cause local residents and road users and therefore we are working closely with local highway authorities and stakeholders in the region to agree the dates.



Find out more

You can find out more by visiting our websites at: <https://m4j3to12smartmotorway.commonplace.is/> or www.highwaysengland.co.uk/m4j3to12. You can keep up to date with live traffic information by following the regional twitter feeds [@highwaysEAST](https://twitter.com/highwaysEAST) and [@highwaysSEAST](https://twitter.com/highwaysSEAST) or by visiting [Traffic England](http://TrafficEngland.com).

If you have a question that you would like a response to please continue to email us at: M4J3to12smartmotorways@highwaysengland.co.uk, call 0300 123 5000 or write to: M4 J3-12 Smart Motorway, Highways England, 2 Colmore Square, Birmingham B4 6BN.